

SIXTY-FIVE SYSTEM

9X9 TYPICAL



STATION OVERVIEW

Station Size

9' x 9'

Tile Style

Fabric Tackable Acoustic
Clear Glass
Metal Beltline
Metal Base

Station Height

86"

Accessories/Extras

LED Task Light
Dual Monitor Arm

Power

Base
Beltline

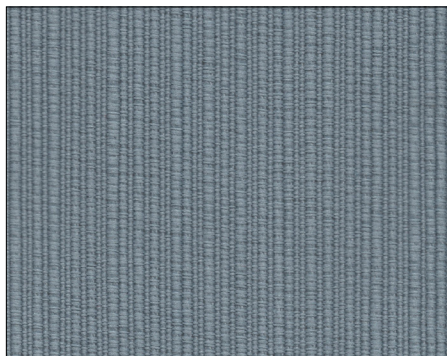
Storage

DS-BF-FP-M Mobile Desking Pedestal
23" D FF-FP Pedestal
14.6" Seat Cushion for Desking B/F Pedestal
42" W Overhead Binder Bin

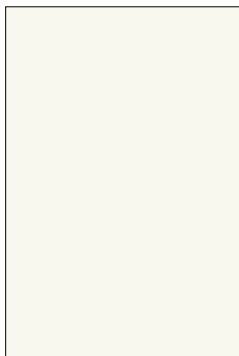
FINISHES



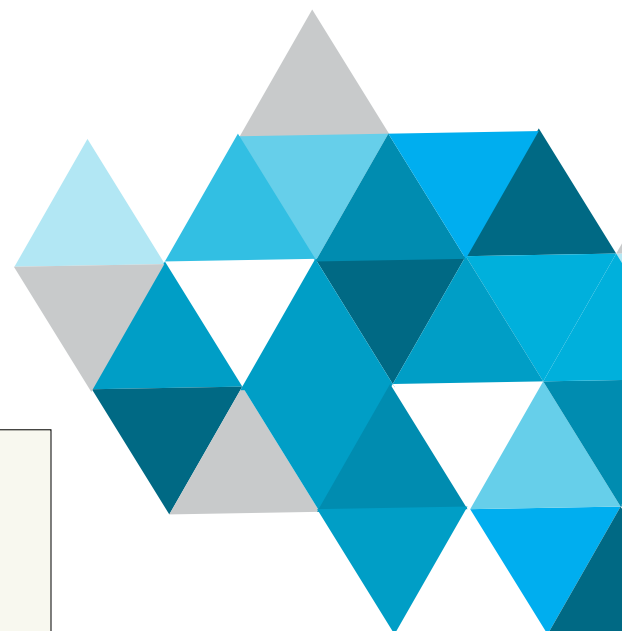
SURFACE & EDGE
Hardrock Maple



MAIN FABRIC Pasture Brook



PAINT WF



SIXTY-FIVE SYSTEM

9X9 TYPICAL

Part Number	Part Description	Qty	List	Ext List	Part Number	Part Description	Qty	List	Ext List
65BB-42	42"W Overhead Binder Bin	1	\$905.00	\$905.00	65PMT-0830	8"H X 30"W Mid Pos Metal Tile	1	\$49.00	\$49.00
65BC-30	30"W Base Cover (Blank)	3	\$45.00	\$135.00	65TA-0830	8"H X 30"W Tack Acoustic Tile	1	\$109.00	\$109.00
65BC-36	36"W Base Cover (Blank)	10	\$49.00	\$490.00	65TA-1630	16"H X 30"W Tack Acoustic Tile	9	\$99.00	\$891.00
65BC-42	42"W Base Cover (Blank)	3	\$49.00	\$147.00	65TA-1636	16"H X 36"W Tack Acoustic Tile	20	\$105.00	\$2,100.00
65BC-60	60"W Base Cover (Blank)	2	\$89.00	\$178.00	65TA-1642	16"H X 42"W Tack Acoustic Tile	8	\$109.00	\$872.00
65BCE-30	30"W Base Cover w/Knockout	1	\$49.00	\$49.00	65TA-1660	16"H X 60"W Tack Acoustic Tile	4	\$149.00	\$596.00
65BCE-42	42"W Base Cover w/Knockout	1	\$65.00	\$65.00	65TA-3230	32"H X 30"W Tack Acoustic Tile	3	\$139.00	\$417.00
65C2-86	86"H 2-Way 90 Deg Conn Post	3	\$249.00	\$747.00	65TA-3236	32"H X 36"W Tack Acoustic Tile	10	\$159.00	\$1,590.00
65F-8630	86"H X 30"W Frame	2	\$495.00	\$990.00	65TA-3242	32"H X 42"W Tack Acoustic Tile	4	\$169.00	\$676.00
65F-8636	86"H X 36"W Frame	5	\$519.00	\$2,595.00	65TA-3260	32"H X 60"W Tack Acoustic Tile	2	\$209.00	\$418.00
65F-8642	86"H X 42"W Frame	2	\$539.00	\$1,078.00	65TC-30	30"W Top Cap	2	\$35.00	\$70.00
65F-8660	86"H X 60"W Frame	1	\$619.00	\$619.00	65TC-36	36"W Top Cap	5	\$39.00	\$195.00
65FE-86	86"H Finished End	2	\$79.00	\$158.00	65TC-42	42"W Top Cap	2	\$45.00	\$90.00
65GT-1630C	16"H X 30"W Top Glass Tile Clear	4	\$159.00	\$636.00	65TC-60	60"W Top Cap	1	\$65.00	\$65.00
65GT-1636C	16"H X 36"W Top Glass Tile Clear	10	\$159.00	\$1,590.00	CANT30A2R	24" Cant Right (for 30" Surfaces)	1	\$13.00	\$13.00
65GT-1642C	16"H X 42"W Top Glass Tile Clear	4	\$199.00	\$796.00	DS-BF-FP-M	Low Metal Mobile Box/File- Full Pull	1	\$889.00	\$889.00
65GT-1660C	16"H X 60"W Top Glass Tile Clear	2	\$279.00	\$558.00	DS-SC15	14.6"W Seat Cushion for Desking B/F Pedestal	1	\$135.00	\$135.00
65P-BL-ML	49" Base Line to Belt Line Festoon	1	\$125.00	\$125.00	FF-FP	File/File Pedestal Full Pull 23"D w/o Top	1	\$775.00	\$775.00
65P-PEK4V2	4 Cir Base Power Entry	1	\$509.00	\$509.00	HLEGS	Square H-Leg for 24"D Surface	1	\$335.00	\$335.00
65P-PTP	18.5" Power Festoon Panel to Panel	1	\$85.00	\$85.00	OPS-201	Dual Monitor Arm	1	\$1,089.00	\$1,089.00
65P-PWR30V1	30" Power Harness-V1	1	\$165.00	\$165.00	PEN7230	72 X 30 Peninsula (No Leg)	1	\$869.00	\$869.00
65P-PWR42V1	42" Power Harness-V1	1	\$245.00	\$245.00	TLN-LED-S-1	LED Task Light w/ Motion Sensor	1	\$395.00	\$395.00
65P-R-I	Rec Circuit 1	2	\$39.00	\$78.00	WS2442	24 X 42 Work Surface	1	\$375.00	\$375.00
65P-R-II	Rec Circuit 2	2	\$39.00	\$78.00					

LIST TOTAL

\$26,034.00

